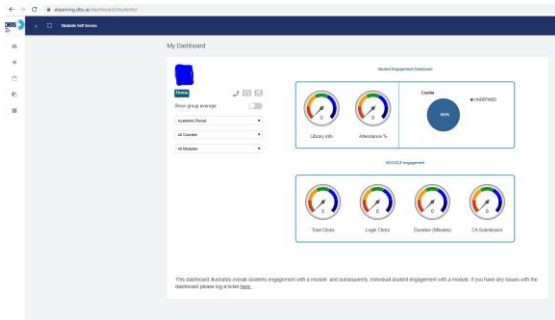


## My Engagement Dashboard – Student User Guide

You can access the dashboard from your MOODLE page by clicking on the link 'My Engagement Dashboard'. Alternatively you can log into the student portal (<https://students.dbs.ie/dashboard>) and click on the 'My Engagement Dashboard' tile.

This will bring you to the dashboard. At this point, the dashboard will not be populated with data.



Click on Academic Period and select the academic year, 1920 for current academic year. Then click on All Courses. Only the course on which you are enrolled on in MOODLE will show. The dashboard will now load with data at a programme level, and a module search box will also appear, along with a number of tables.



If you hover your cursor over a dial, a text box will explain what the dial is showing.

**Library info** – The value in the dial is your number of borrowings. The dial ranges from 0 borrowings to the total number of borrowings of your cohort, e.g., first year, full-time psychology.

**Attendance** – The value in the dial is your average attendance. The dial ranges from 0% to 100%. If you click on the dial, a line graph will appear which will show your attendance over time.

**Credits** – This pie chart shows the % of credits you have completed, and the % of credits you have yet to complete. If you are enrolled on a non-credit bearing programme, this pie chart will be blank.

**Total Clicks** – The value in the dial is your total number of clicks in MOODLE. The dial ranges from 0 to the total number of clicks by your cohort.

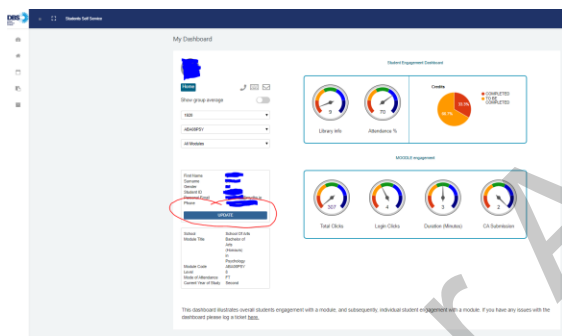
Login Clicks - The value in the dial is your average number of clicks per login in MOODLE. The dial ranges from 0 to the maximum average number of clicks per login in MOODLE by your cohort.

Duration - The value in the dial shows your average duration (in minutes) of time in MOODLE per login. The dial ranges from 0 to the maximum average duration of time in MOODLE per login by your cohort.

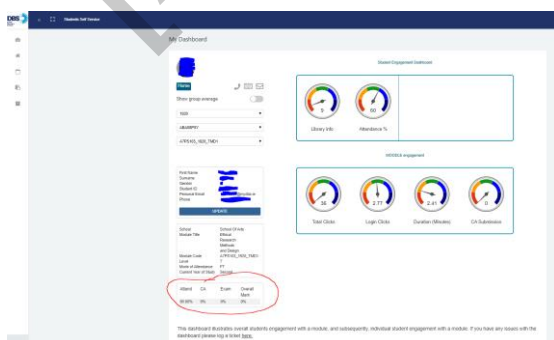
Together, Total Clicks, Login Clicks, and Duration provide an indication of your engagement with MOODLE.

CA Submission – The value in the dial shows the total number of CAs you have submitted via MOODLE. The dial ranges from 0 to the maximum average number of CAs submitted via MOODLE by your cohort.

The tables on the left of the dashboard shows you information associated with you that we have in our student information system. If this information is incorrect you can update some of the information by clicking on the big blue update button or by contacting your programme co-coordinator.



If you want to see your engagement at a module level, click on All Modules search box. Only the modules you are enrolled on in MOODLE will show here. Select your module of interest. The dashboard will now populate at a module level, that is, the engagement data you now see is specific to the module you have selected. A further box has also populated which shows attendance, CA Mark, Exam Mark, and Overall mark. Marks will not populate until they have been released by your lecturer. In addition, all marks remain provisional until they have been ratified by the external Exam Board.



If you want to compare your own engagement data with that of your cohort, click on the 'show group average' button.

And that's it, straightforward to use, and to interpret (hopefully)!

Please note that the dashboard is designed to provide you with an indication of how you are engaging with your module. However, it is not possible to include all measures of student engagement! We do intend to add further features to the dashboard over the coming months.

LAS per AQR 2022]